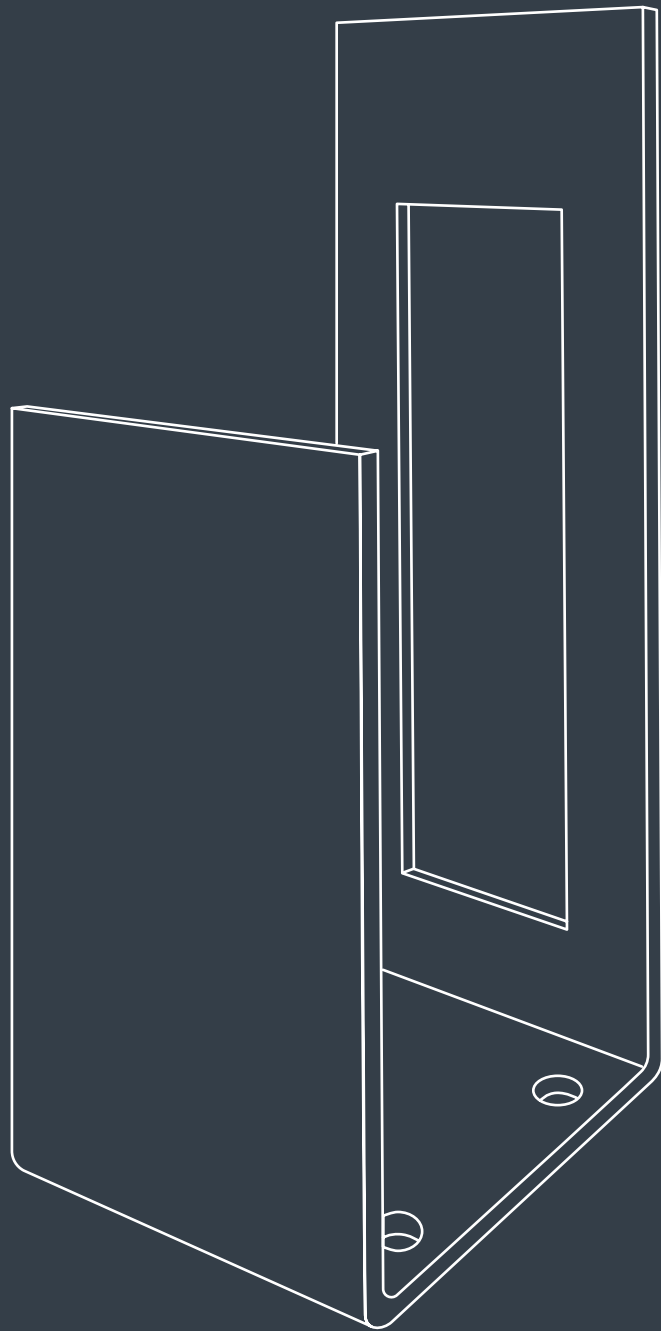
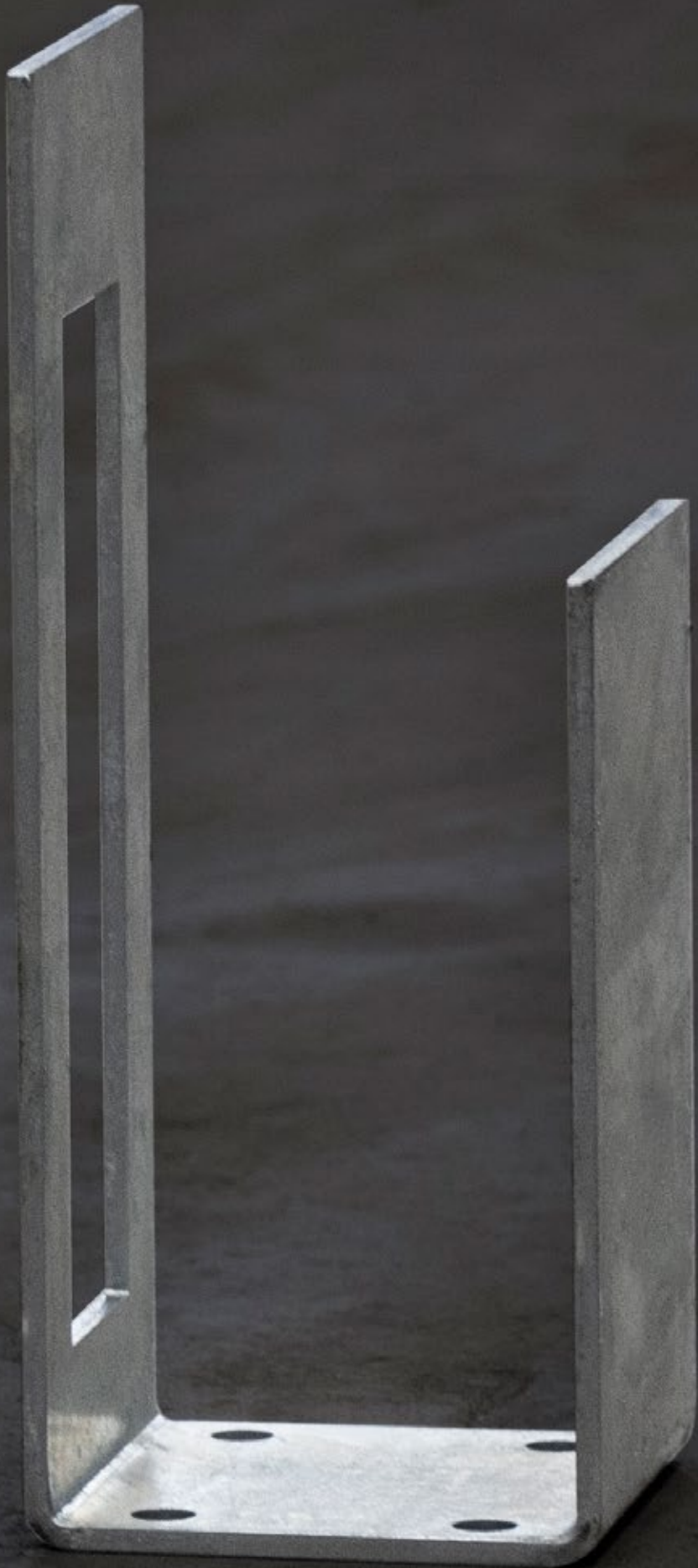


# Residential & Rural Fencing Base Plates.

Installation Guide



**thinkfencing**  
The Thoroughbred of Fences



# Contents

Getting Started	4
Important Information	4.1
Tools Required	5
Instructions	6
Preparing the site	6
Base plate spacing	7
Securing base plates	8
Posts and bottom rails	9
Securing the posts	10

# Getting Started

Congratulations on your new Think Fencing System.

This install guide will show you step by step how to install your new PVC fence, using our custom made base plates.

As long as the footing is suitable, you can have your new fence up in no time without the mess and hassle of digging and concreting posts.

## Gate Features:



DIY  
Installation



Eco  
Friendly



Australian  
Made



Lifetime  
Warranty



Never Paint  
Again



Graffiti  
Resistant

## Important Information - 4.1

Each base plate comes with 4 x anchor screws and 8 x metal self drilling screws.

The base plate is designed to be slightly smaller than the PVC post to allow you to install the posts plumb using the tek screws provided.

If you are installing on timber (ie. a deck) you will need to purchase appropriate fasteners and consider the material thickness and integrity. The base plate method requires a solid foundation

# Tools Required.

What you will need  
to get the job done.



String Line



Tape Measure



Pencil



Safety Glasses



Hearing Protection



Spirit Level



Drill/Driver



5/16 Tek Driver bit



Impact Wrench



Rotary Hammer  
Drill



10mm Rotary  
Hammer Drill bit



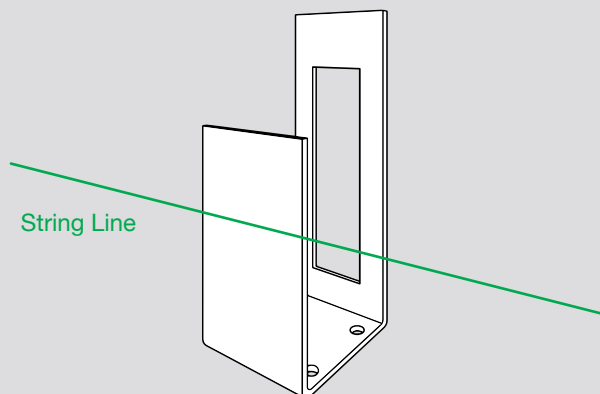
Ratchet

# Fence Base Plate

## 1 Preparing site

### 1.1 String Line

Prepare the site ensuring you don't have any significant undulations. You can then run one string line along the side of the base plates.



What you will need:

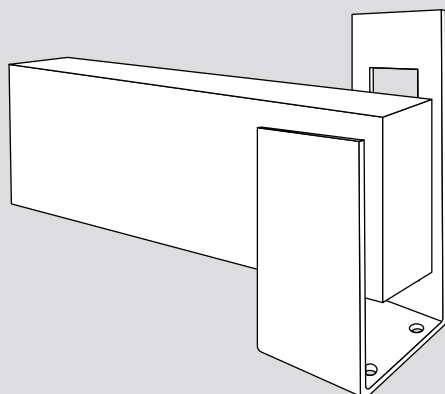


### 1.2 Base Plate Orientation

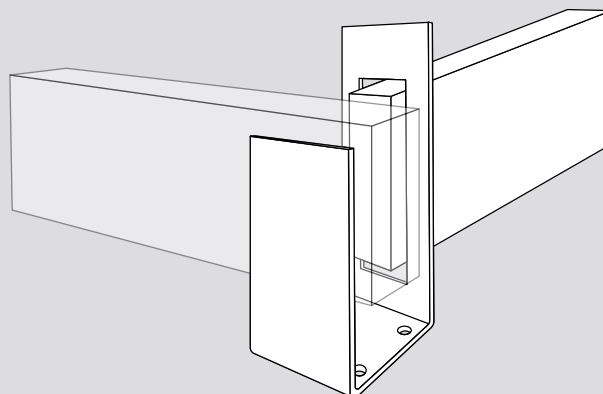
Consider the orientation of the rails when positioning the base plates. The rails have to run through the base plates, so the orientation is crucial.

For corner posts the rail will go through the large cut out in the base plate.

Standard line posts



Corner posts



# 2 Base plate spacing

## 2.1 Base plate spacing

Determine the spacing required

### Method one

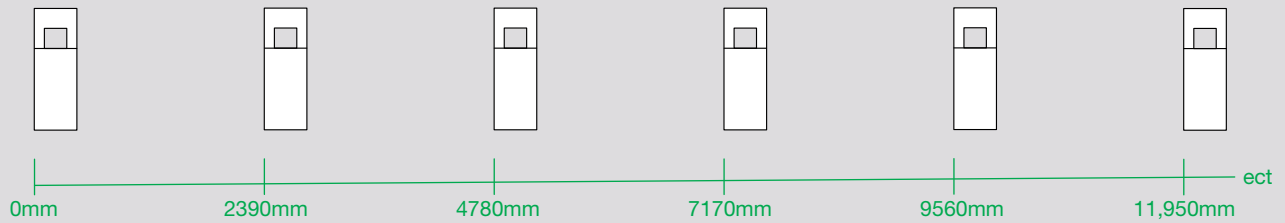
For the most accurate spacing use a long tape measure and lay it along the side of the base plates. Then place the base plates at the desired spacings.

**Please Note:** Spacing depends on the fence style. Standard Spacing:

Picket: 2390mm

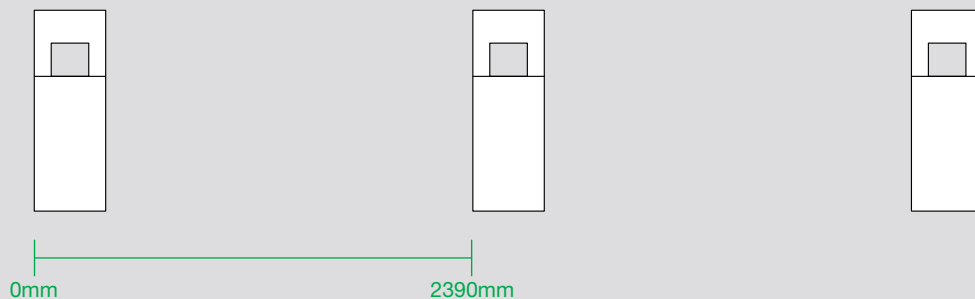
Mystique: 2390mm

Post and Rail: 2425mm



### Method two

If you don't have a tape measure long enough, measure the spacing individually.



**Please Note:** examples are showing spacing for picket fence.

**What you will need:**



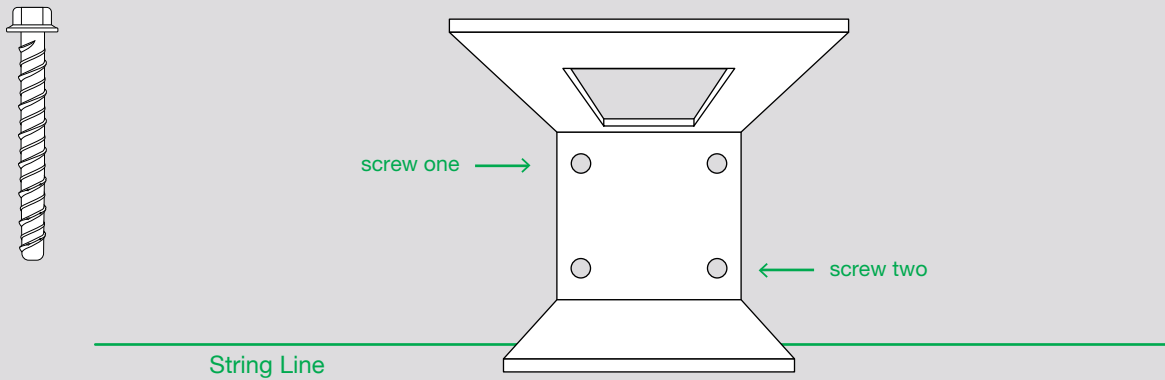
# 3 Securing base plates (concrete slab/footing)

## 3.1 Anchor into place

Once base plate placement, spacing and orientation is correct.

Use a rotary hammer to pre-drill into the concrete through the holes in the baseplate.

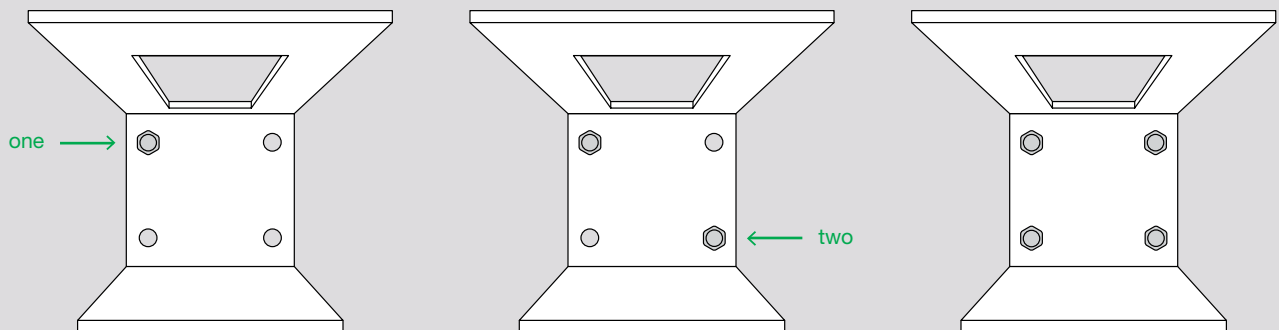
**Pro Tip:** Start with the diagonally opposite screws for the most accurate outcome.



1. Anchor screw one to secure the width against the string line.

2. Anchor screw two to make sure it is square with the string line.

3. Repeat with the remaining screws.



What you will need:



**Please note:** If you are installing on timber (ie. a deck) you will need to purchase appropriate fasteners and consider the material thickness and integrity. The base plate method is only as solid as the foundation it is fixed to.

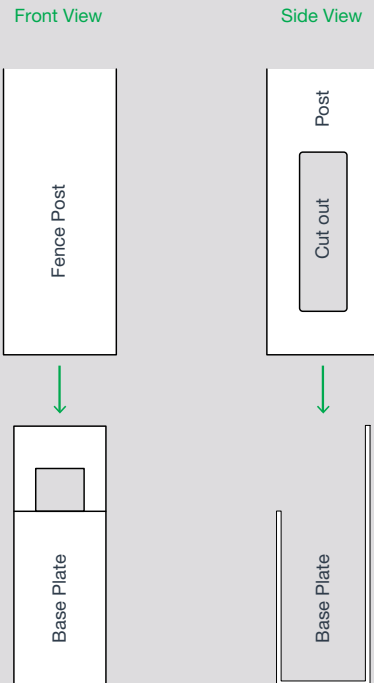
**Please Note:** If you are fixing the anchor screws manually, you may need to use a ring spanner so you don't break the anchor.



# 4 Add posts and bottom rails

## 4.1 Slide on fence post

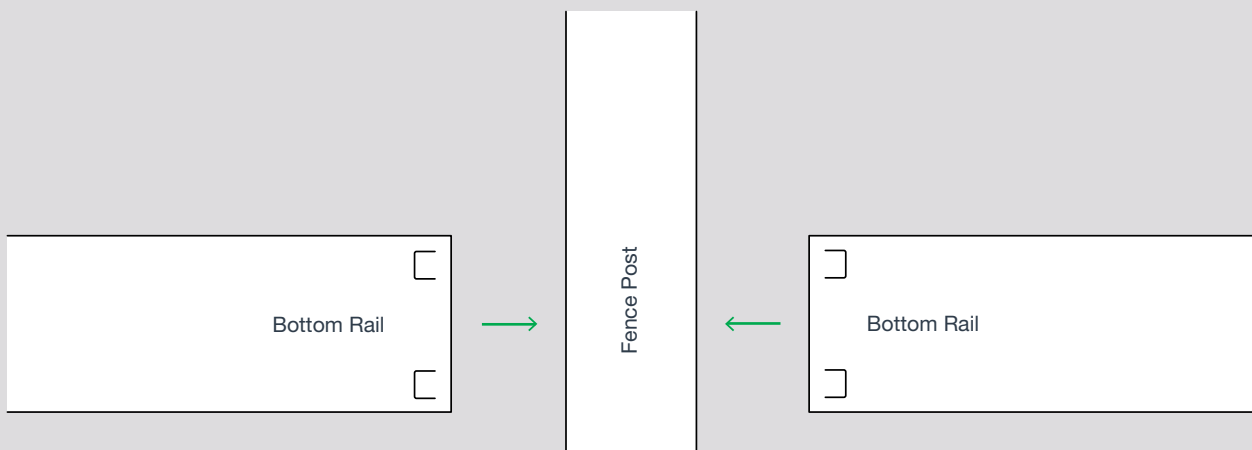
Slide the fence post over each base plate, ensuring that the cut-outs are orientated correctly and the post is the right way up.



## 4.2 Slide bottom rails into place

Pre crimp the bottom rails then slide them into the posts. Centre the rails between posts.

**Pro Tip:** For picket fencing make sure that the bottom rail is centred between posts or the pickets will be off centre.



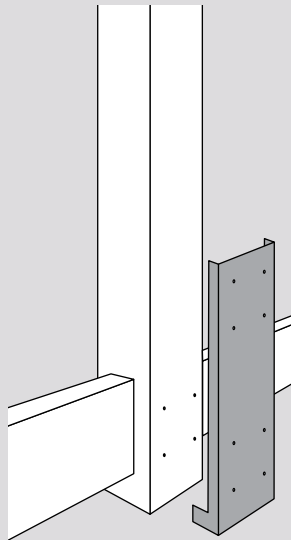
# 5 Securing the posts

## 5.1 Pre drill holes for screws

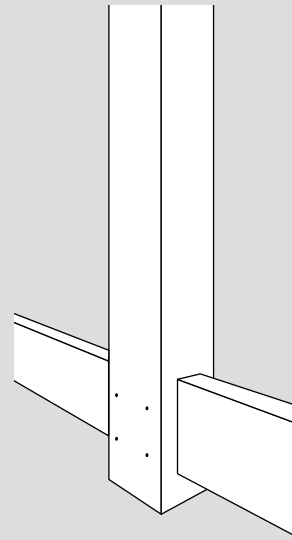
Using the jig provided hold it against the post and lift until the tabs are up against the bottom of the bottom rail. Pre drill the four bottom holes.

**Please Note:** The base plate doesn't need to be pre drilled. The series 500 screws provided are self tapping.

Inside Fence



Outside Fence



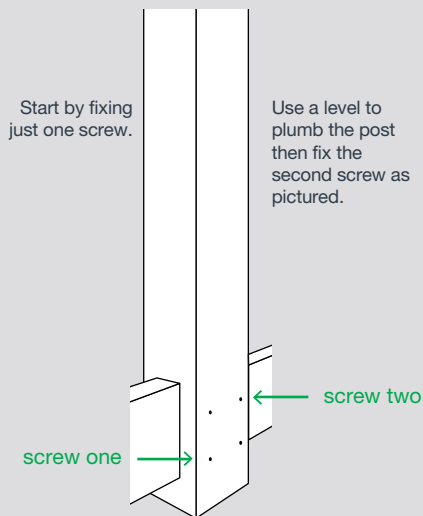
What you will need:

## 5.2 Securing with screws

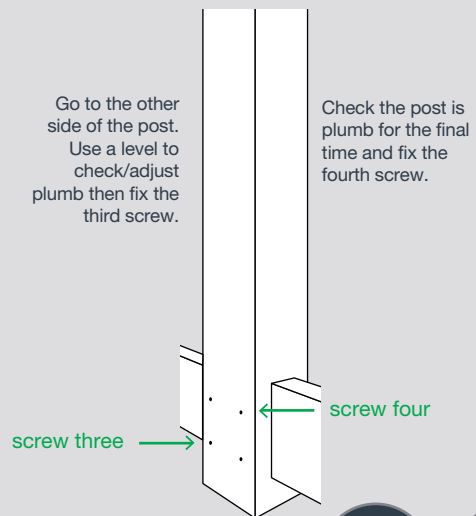
Use the series 500 screws to fasten each post to each base plate. Add screws to the diagonally opposite corners on both sides of the fence, as shown in the example below. Check to make sure the post is still straight before each screw.



Inside Fence



Outside Fence



What you will need:

# Gate Base Plate

## 1 Installing Gate Base plate

### 1.1 Fixing the hinge post to gate base plate.

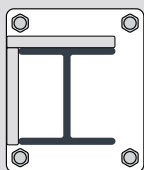
Position the load bearing gate post where required. Pre-drill the holes with the rotary hammer drill and anchor in place.

*(The gate base plate is an external fix to give the post a larger stance for greater stability and load capability.)*

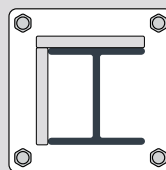
**Please Note:** If the post isn't plumb or the ground isn't level you can place packers under the base plate.

#### Off centre gate base plate

*\*To be used against a wall*



#### Centred gate base plate

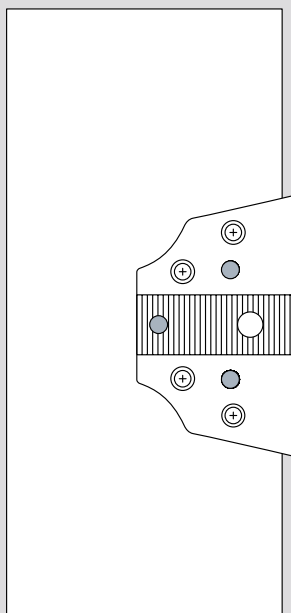


### 1.2 Fastening the post and hinges

Slide the gate post over the gate base plate ensuring that it is orientated correctly and the post is the correct way up.

Use the series 500 screws provided to attach the hinge plate to the post. These screws are self tapping and will not require pre drilling.

This will also fasten the post to the base plate and provide stability for the gate.



**Please Note:** The base plate is 8mm steel, you may choose to take a further 10mm off the post to match the height of your fence.

What you will need:



### 1.3 Fastening the gate

Follow the gate installation guide and hinge instructions to hang the gate.

What you will need:





**thinkfencing**  
The Thoroughbred of Fences

**Head Office:**

2415 Geelong/Portarlington Road,  
Portarlington, 3223 Victoria Australia

**P.** +613 5259 2555

**E.** [sales@thinkfencing.com.au](mailto:sales@thinkfencing.com.au)

**www.thinkfencing.com.au**